

Our Fall Protection Series Exterior Skylight Fall Screens are an ideal cost effective and easy-to-install solution to protect from accidental falls through skylights. The use of a Skylight Fall Screen eliminates the potential danger that exists with unguarded skylights and creates a safe working environment for all rooftop services. Built entirely from North American sourced, high-grade materials, this product is manufactured from heavy gauge, anti-corrosive galvanized welded steel to provide the ultimate protection. Our screens have been rigorously tested by a third-party lab to the latest CAL-OSHA requirements.

Artistic Skylight® offers the widest range of standard sizes available that can also be customized to fit almost any project application.

Model FPS-FF Available Sizes			
Model #	Skylight Frame Dimensions	Max. Dome Height	QTY
FPS-FS 2020	19 1/2" x 19 1/2" (495mm x 495mm)	4" (102mm)	
FPS-FS 2052	19 1/2" x 51 1/2" (495mm x 1308mm)	4" (102mm)	
FPS-FS 2828	27 1/2" x 27 1/2" (699mm x 699mm)	5" (127mm)	
FPS-FS 2836	27 1/2" x 35 1/2" (699mm x 902mm)	5" (127mm)	
FPS-FS 2852	27 1/2" x 51 1/2" (699mm x 1308mm)	5" (127mm)	
FPS-FS 2860	27 1/2" x 60 1/4" (699mm x 1530mm)	5" (127mm)	
* FPS-FS 2876	27 1/2" x 74 3/4" (699mm x 1899mm)	6" (152mm)	
* FPS-FS 2896	27 1/2" x 94 3/4" (699mm x 2407mm)	6" (152mm)	
FPS-FS 3636	35 1/2" x 35 1/2" (902mm x 902mm)	6" (152mm)	
FPS-FS 3642	35 1/2" x 42 1/4" (902mm x 1073mm)	7" (178mm)	
FPS-FS 3652	35 1/2" x 51 1/2" (902mm x 1308mm)	7" (178mm)	
FPS-FS 3660	35 1/2" x 60 1/4" (902mm x 1530mm)	7" (178mm)	
* FPS-FS 3676	35 1/2" x 74 3/4" (902mm x 1899mm)	7" (178mm)	
* FPS-FS 3696	35 1/2" x 94 3/4" (902mm x 2407mm)	7" (178mm)	
FPS-FS 4242	42 1/4" x 42 1/4" (1073mm x 1073mm)	8" (203mm)	
FPS-FS 4252	42 1/4" x 51 1/2" (1073mm x 1308mm)	8" (203mm)	
* FPS-FS 4280	42 1/4" x 80 1/4" (1073mm x 2038mm)	9" (229mm)	
FPS-FS 5252	51 1/2" x 51 1/2" (1308mm x 1308mm)	10" (254mm)	
FPS-FS 5260	51 1/2" x 60 1/4" (1308mm x 1530mm)	10" (254mm)	
* FPS-FS 5276	51 1/2" x 74 3/4" (1308mm x 1899mm)	10" (254mm)	
* FPS-FS 5280	51 1/2" x 80 1/4" (1308mm x 2038mm)	11" (279mm)	
* FPS-FS 5296	51 1/2" x 94 3/4" (1308mm x 2407mm)	11" (279mm)	
FPS-FS 6060	60 1/4" x 60 1/4" (1530mm x 1530mm)	12" (305mm)	
* FPS-FS 6076	60 1/4" x 74 3/4" (1530mm x 1899mm)	12" (305mm)	
* FPS-FS 6096	60 1/4" x 94 3/4" (1530mm x 2407mm)	12" (305mm)	
* FPS-FS 7272	72 1/4" x 72 1/4" (1835mm x 1835mm)	14" (356mm)	
* FPS-FS 7296	72 1/4" x 94 3/4" (1835mm x 2407mm)	14" (356mm)	
FPS-FS CUST.			
FPS-FS CUST.			
FPS-FS CUST.			
FPS-FS CUST.			

Project: \_\_\_\_\_

Contractor: \_\_\_\_\_

Architect: \_\_\_\_\_

Approved By: \_\_\_\_\_

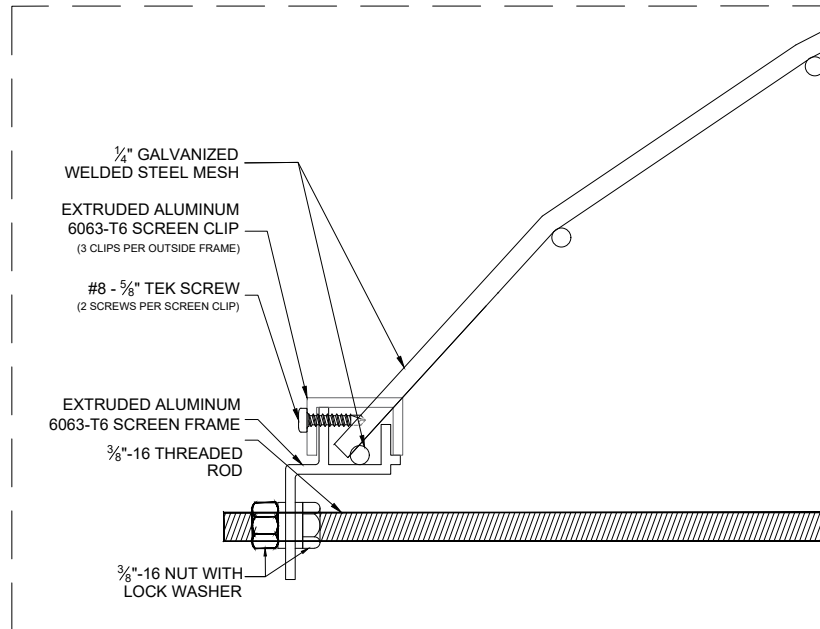
Date: \_\_\_\_\_

**Specifications:**  
Exterior Skylight Fall Protection Screen shall be factory built Model No. \_\_\_\_\_ FPS-FS as manufactured by Artistic Skylight Domes Ltd. Vaughan, Ontario. Screen shall consist of 4 x 4 x 4/4 (4 ga. .226") galvanized welded wire mesh. Fall screen mounting rails and screen retainer clips shall consist of corrosion resistant mill finish extruded aluminum, 6063-T6 alloy. Screen rails shall be connected on either end with 3/8-16 stainless steel threaded rod and 3/8-16 stainless steel nut and lock wash to secure. Exterior Skylight Fall Protection Screen will ship complete with all components and may require some site assembly.

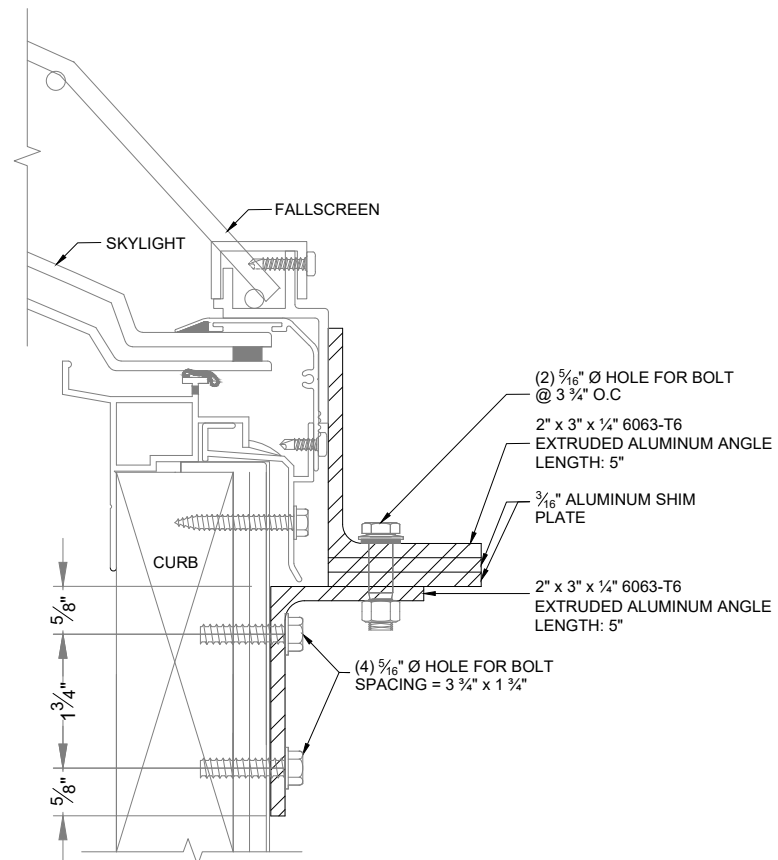
\* INDICATES SKYLIGHT SIZES THAT REQUIRE INTERMEDIATE SUPPORT BRACKET.

Note: It is the sole responsibility of the customer to ensure that the product selected meets the building codes for the jurisdiction in which they are being installed.

**DETAIL 1**



**INTERMEDIATE SUPPORT BRACKET DETAIL**  
(APPLIES ONLY TO SKYLIGHTS WITH LENGTH LONGER THAN 70")



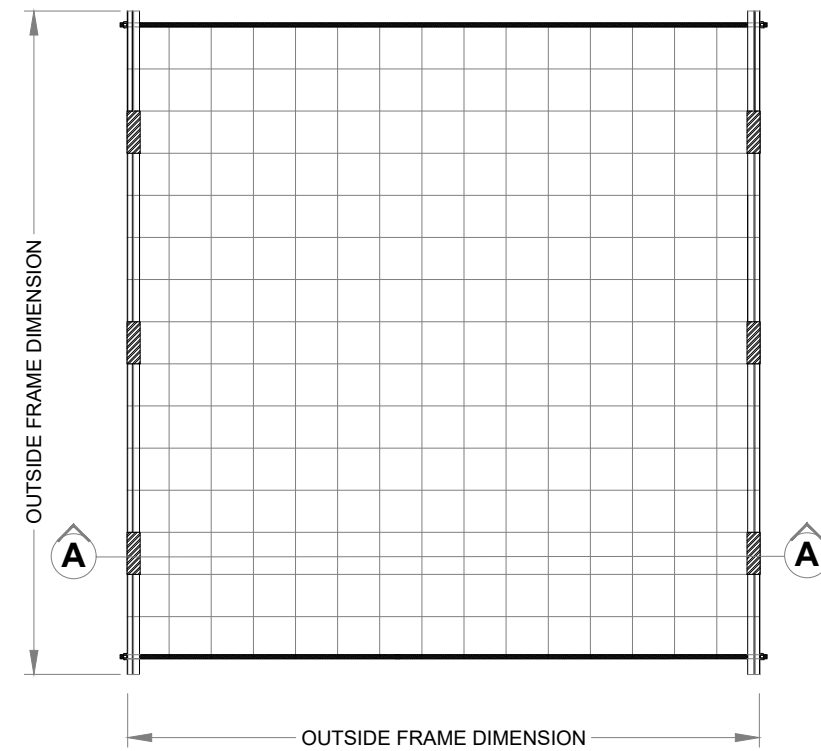
**Model FPS-FS**

**Fall Protection Series Skylight Fall Screen (Exterior)**

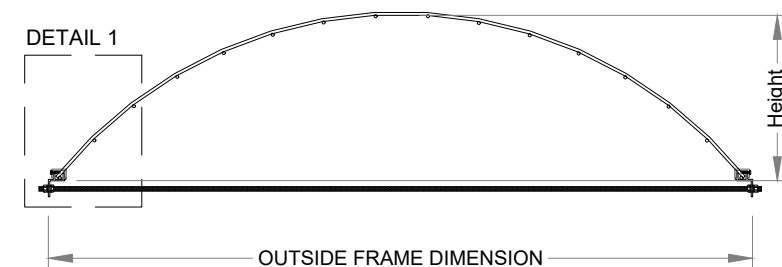


Actual product may not be exactly as shown

**PLAN**



**SECTION A-A**



**Artistic**<sup>®</sup>  
SKYLIGHT DOMES  
RESIDENTIAL & COMMERCIAL SKYLIGHTS

Tel: (416) 747-7233 or  
1-866-878-DOME (3663)

Fax: (416) 747-6630

Website:  
www.artisticskylight.com

Email:  
artistic@artisticskylight.com

TITLE:  
FALL PROTECTION SERIES  
SKYLIGHT FALL SCREEN  
(EXTERIOR)

DATE	30/11/21
DRAWN BY	S.J.
CHECKED BY	D.F.
DRAWING NO.	SD. 01/01
FILE NO.	ART21-2911

NOTES:

**REVIEW DRAWING ONLY**

NO FABRICATION TO BEGIN UNTIL THE RETURN OF REVIEWED DRAWINGS TO

255 Regina Rd.  
Vaughan, Ontario, Canada L4L 8M3  
E-mail: artistic@istar.ca  
Web: www.artisticskylight.com