

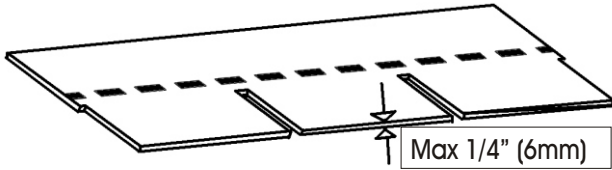
Installation instructions for FKT flashing kit



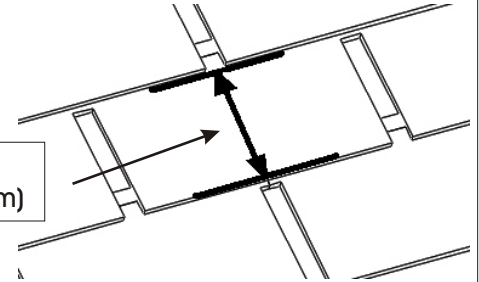
This kit is designed for...

1

Use with thin roofing materials, such as asphalt shingles, with a maximum thickness of 1/4" (6mm), and overlap exposure between 4 1/2" and 5 1/2" (115mm to 140mm)

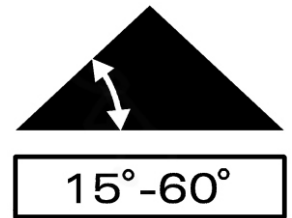


4 1/2" - 5 1/2"
(115mm - 140mm)



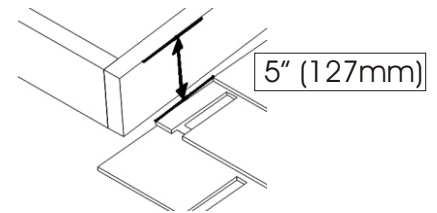
2

Use with roof pitch from 15 degrees (3:12) to 60 degrees (20:12)



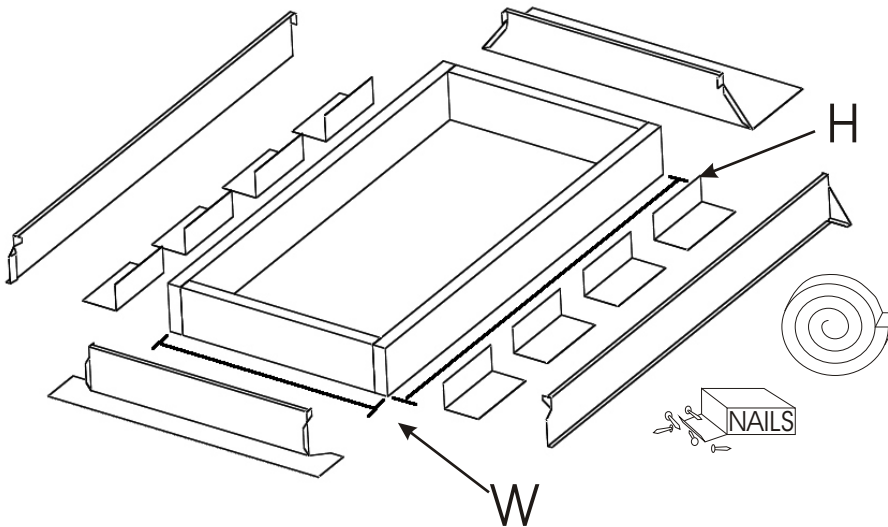
3

Use on curb which is 5" (127mm) above the shingles. If curb is less build up to suit.



Note: if there are more than 1 layer of shingles, all steps refer to installing flashing and underlayment below top layer only.

Parts Included: metal flashing components, weatherstripping, nails.

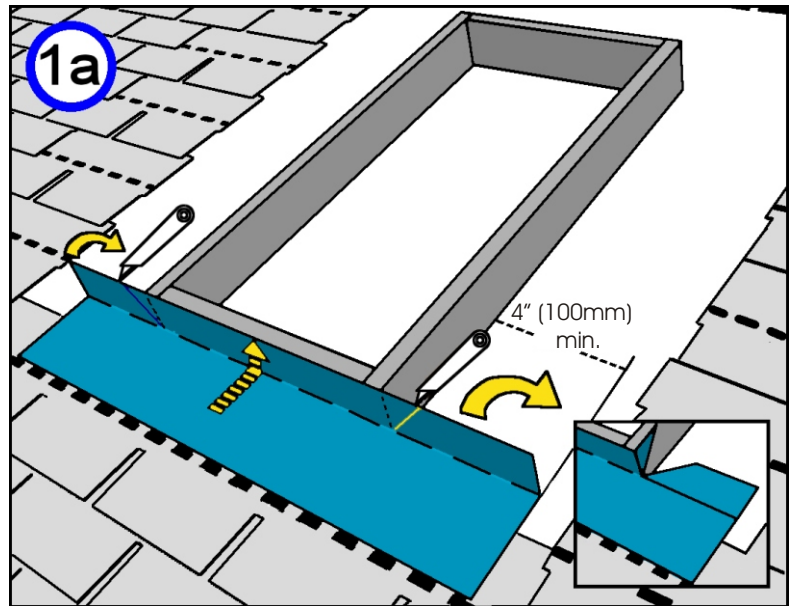


FKT for skylight model	Rough Opening (inside curb dimension)	Outside curb dimension (W x H)
2828	22 1/4 x 22 1/4" (565 x 565mm)	25 1/4 x 25 1/4" (641 x 641mm)
2836	22 1/4 x 30 1/4" (565 x 768mm)	25 1/4 x 33 1/4" (641 x 845mm)
2852	22 1/4 x 46 1/4" (565 x 1175mm)	25 1/4 x 49 1/4" (641 x 1251mm)
3636	30 1/4 x 30 1/4" (768 x 768mm)	33 1/4 x 33 1/4" (845 x 845mm)
3652	30 1/4 x 46 1/4" (768 x 1175mm)	33 1/4 x 49 1/4" (845 x 1251mm)
5252	46 1/4 x 46 1/4" (1175 x 1175mm)	49 1/4 x 49 1/4" (1251 x 1251mm)

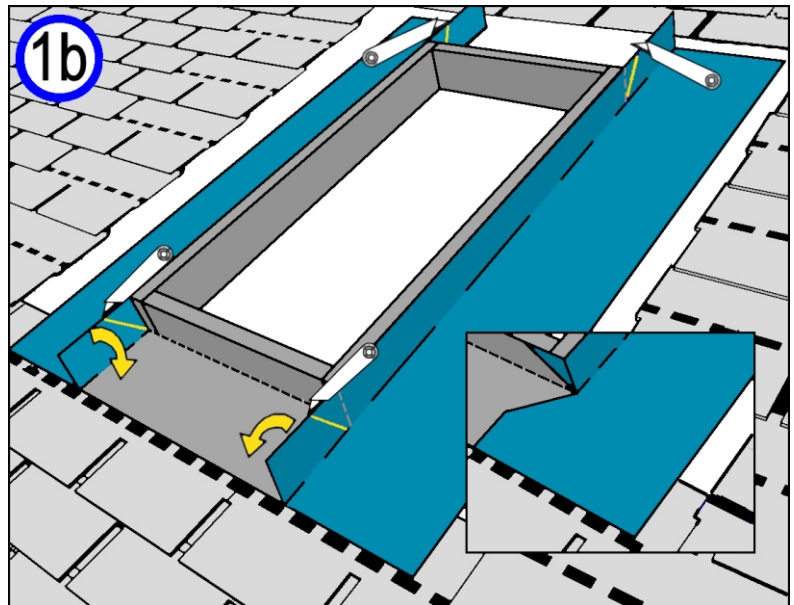
Caution: Edges of flashing may be sharp, handle with care.

Installation procedure

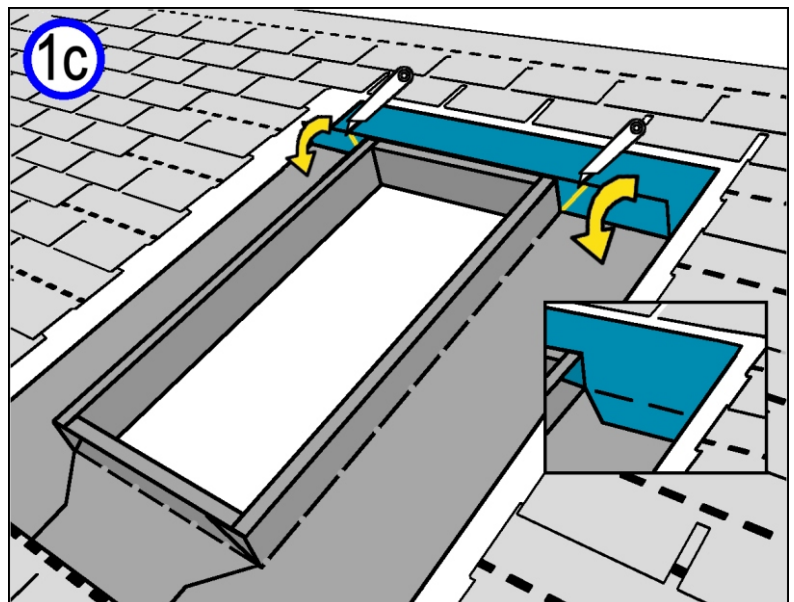
1 Apply self adhesive underlayment before installing flashing kit. We recommend use of Artistic Skylight underlayment kit ULK. Wrap curb with underlayment, starting at bottom (1a). Start applying underlayment at top of curb and work down face to roof deck. Press firmly into corner and extend onto roof. Extend underlayment a minimum of 4" (100mm) past curb. Cut corners and fold as shown.



Next, Install Underlayment against two sides of curb (1b). Again start at top of curb, work underlayment tight into corner, and finally out on roof deck. Trim corners as shown. Cut corners and fold as shown.

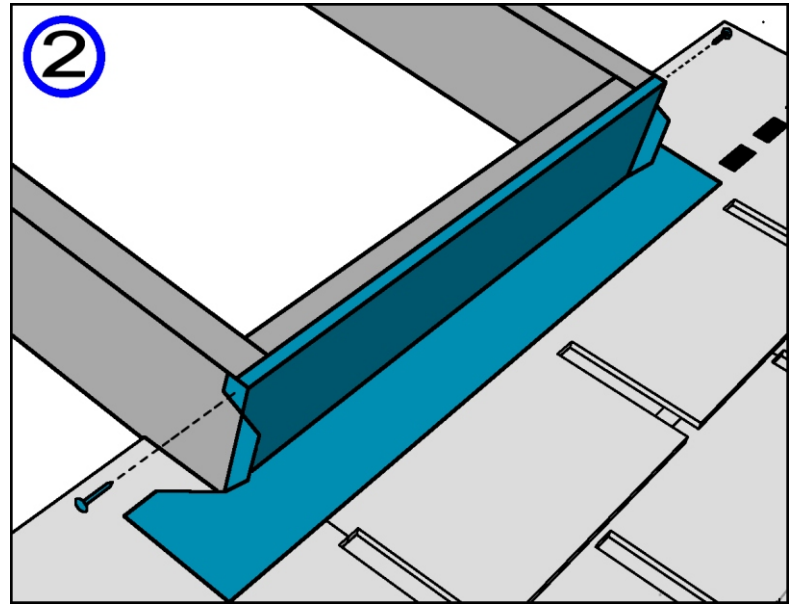


Finally, install the top underlayment (1c). Follow the same procedure as the bottom and sides.



Installation procedure

2 Trim sill shingle to proper fit, and replace to cover underlayment. Install sill flashing as shown. Secure with 2 shingle nails.

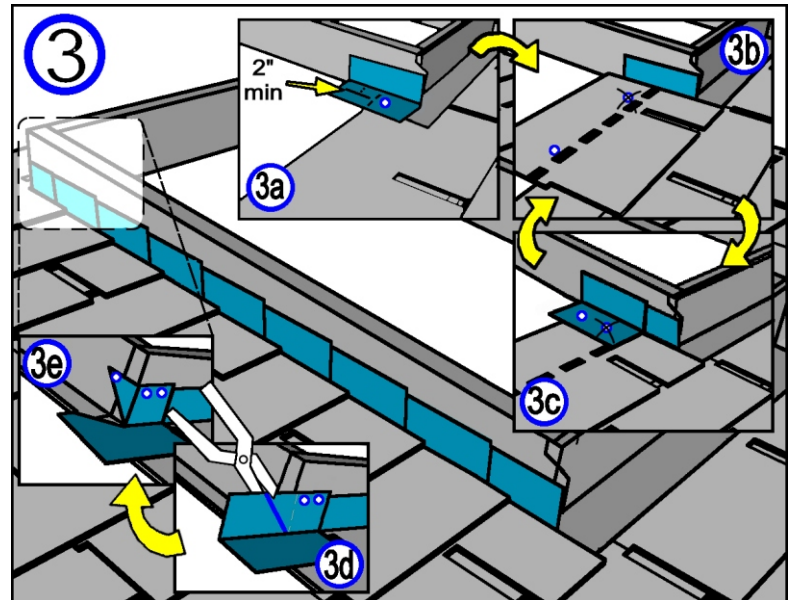


3 Install step flashing and shingles beginning at the bottom as shown (3a).
Note: Nail through step near top edge of shingle, and minimum 2" (50mm) from the bend.

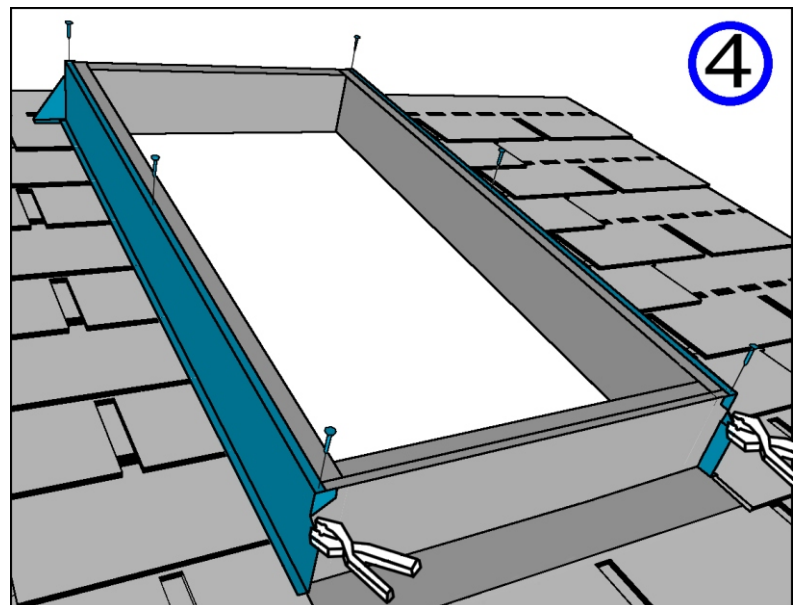
Continue interweaving step flashing with shingles up sides of curb (3b to 3c).

Nail top step flashing into side of curb only (do not nail into roof deck). Cut top step flashing at a 45 degree angle from the corner out as shown (3d).

Bend top step flashing and secure tab as shown (3e).

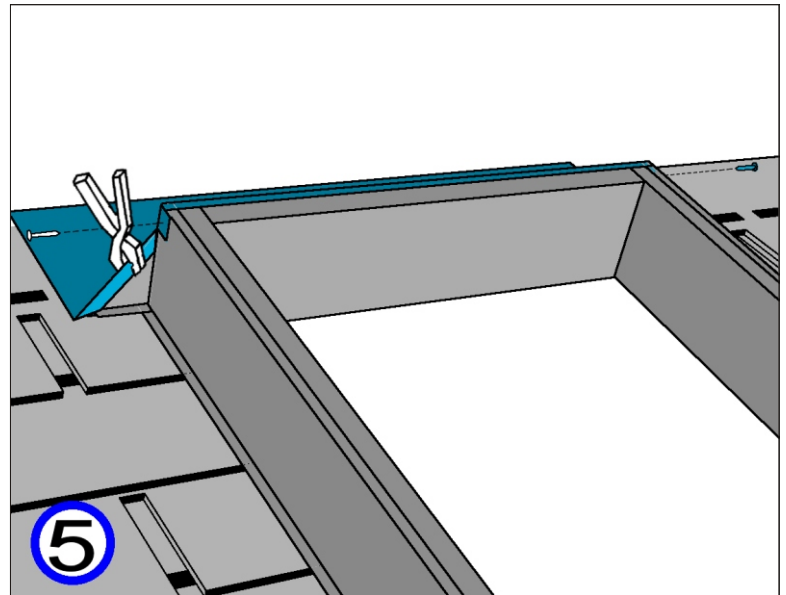


4 Install side counter flashing, ensuring bottom tabs overlap tabs of sill flashing. Nail into top of curb. Squeeze tabs with pliers to lock corners.

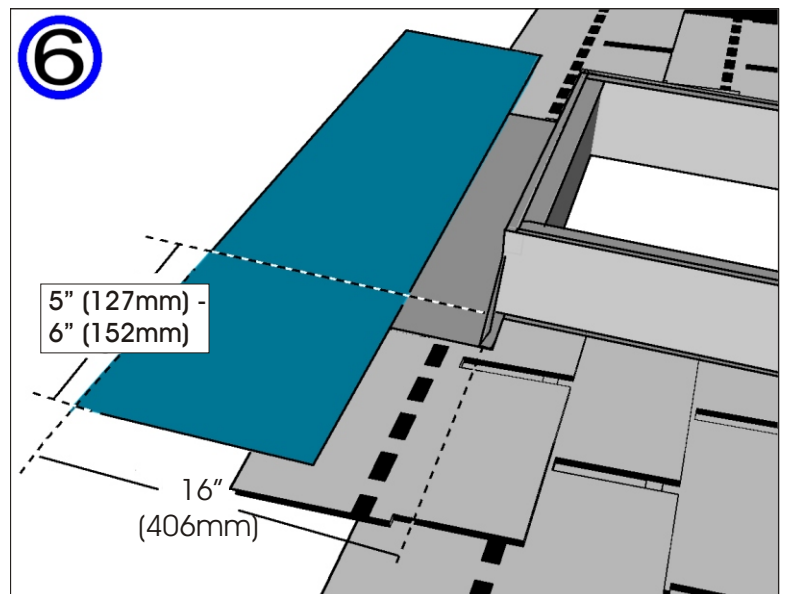


Installation procedure

5 Install head flashing, ensuring tabs overlap counterflashing tabs. Nail into top of curb. Squeeze tabs with pliers to lock corners.



6 Overlap head flashing with underlayment as shown



7 Replace remaining shingles. Apply weatherstripping to top of curb. Tack weatherstripping with roofing nails. Mount and secure skylight with screws as shown

